

Blouse, recommended fabric: limp cotton, viscose, linen: 1.40 br.  
 Skirt, recommended fabric: cotton, viscose, linen, thin denim, 1.40 br.

## CONSUMPTION, mtr:

	92	104	116	128	140	152
blouse	1.30	1.50	1.70	1.85	2.00	2.20
skirt	0,80	0.90	1,00	1,10	1,20	1.30

## REQUIREMENTS:

## BLOUSE: yarn

interfacing  
 buttons, 12mm

92	104	116	128	140	152
4	4	4	5	5	5

4 different kind of ribbon:  
 3 mtr. satin ribbon, 6mm, light

## colour

1,5 mtr satin ribbon, 6mm, dark

## col.

2,5 mtr. transparent ribbon,

## 12mm

75 cm fancy ribbon

## SKIRT:

yarn  
 interfacing  
 50 cm elastic with buttonholes  
 2 flat buttons, 15mm  
 zipper, 18cm  
 fancy ribbon, mtr.:

92	104	116	128	140	152
3.25	3.50	3.75	4.25	4.75	5.25

## INSTRUCTIONS, NEXT PAGE:

Place both lower parts to each other, both with the right side up! Join along the unfinished edge. Join the lower part to the hem edge of the blouse right sides together. Beware! Making sure the center front seam of the upper panel is 1cm greater than that of the bottom part. Finish seam allowances.

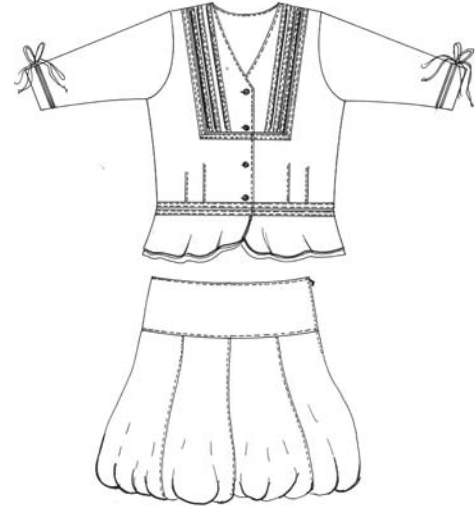
Pin the facing to the panel's right sides together. Join the hem edge (bottom edge is caught in between the facing and the front panel), the center front and neckline. Cut back seam allowances, diagonally across corners. Turn facing inside, press edges carefully and top stitch the center front and neckline as well as the joining seam of the bottom edge.

Work the buttonholes at the centre frontline, upper horizontal, the others vertical. Sew button on.

All that's left is to stitch your ABACADABRA neck label into the blouse and you've completed the job!

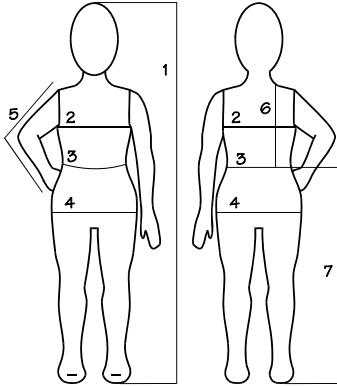
# ABACADABRA®

www.abacadabra.com



Download your own language from our site!  
 AVAILABLE  
 ENGLISH  
 DEUTSCH  
 www.abacadabra.com

## Take the child's measurements!



1.height	92	104	116	128	140	152
2.chest	54	58	60	64	71	79
3.waist	52	54	56	58	61	65
4.hip	55	61	65	69	75	83
5.sleeve length	31	36	41	46	51	55
6.back waist l.	23	25	27	30	32	36
7.side length	53	62	71	80	89	96

## Explanation of symbols

	Button
	Buttonhole/eyelet
	Balance mark
	Balance mark

## PATTERN PREPARATION

- Compare body measurements with the ABACADABRA measurement chart, choose the size corresponding with the breast and hip of the child
- Draw length measurements differences on to the pattern.
- Wash the fabric before cutting
- All patterns are without seams and hems, skirts side seam and the side seam off the blouse, seam allowances 2 cm, other seam allowances 1 cm
- Note the grain line marked on the pattern! Run the grain line parallel with the selvage.
- Lock stitch: strengthening stitch, (fine zigzag stitch).
- After cutting out the fabric panels, transfer all seam lines and markings onto the fabric. Transfer fold and stitching lines to the right sides of the fabric with basting stitches.

## MODEL 77: SKIRT

### INSTRUCTIONS:

Strengthen 1 waistband of the front and 1 waistband of the back with interfacing.

Place the lining of the skirt right sides together and join one straight seam. Press seam allowances apart.

Join the 8 panel's of the under part of the skirt right sides together so one long panel is formed. Press seam allowances and join the fancy ribbon on top of each seam. Join the ribbon also at one edge

of the open seam, distance between the ribbon and the cut edge is 2cm.

Gather the upper and lower edge of the skirt. The length after gathering must become the same length as the upper and lower edge of the lining. Gathering on the machine at this way: sew on 0,5cm and 1,5cm from the cut edge with large stitches. Tighten bobbin threads to the respective hem width and knot ends. Even out the gather.

Join the bottom edge to the bottom edge of the lining, right sides together. Remove the 'gather' threads.

Join the right side seam of the waistband; try on the waistband (if you've the opportunity) if the waistband is too wide, narrow it at this moment.

Work two buttonholes in the 'inside waistband' as marked at the pattern of size 92 (length of the buttonhole must be the width of the elastic with buttonholes). Place both upper parts right sides together and sew the upper edge, press seam allowances apart.

Join the bottom edge of the strengthened waistband to the gathered edge of the skirt, right sides together. Press seam allowances into the waistband.

Join the bottom edge of the plain waistband (the one with the buttonholes) to the upper edge of the lining right sides together. Press seam allowances apart.

Zipper: measure the below size at the side seam, starting on top of the waistband. The marked point is the bottom of the opening for the zipper.  
Size 92 and 104: 14cm  
Size 116 and 128: 16cm  
Size 140 and 152: 18cm

Sew the side seam only from the zipper mark to joining seam of the lining. Press seam allowances apart. Press the seam allowances at the place of the zipper under. Baste the zipper under the left side seam (only the outside of the waistband and skirt!); fold the upper bit of the zipper tape down, the 'teeth' of the zipper must be at the top of the side seam. Join the zipper to the side seam. Join the inside of the waistband to the zipper with hand stitches. Join the opening of the lining.

Baste the bottom edge of the waistband through and through. Join the fancy ribbon along the bottom edge of the waistband, simultaneously stitching the bottom edge of the waistband at the inside.

Sew at the back part of the waistband a stitch line above and under the buttonholes, so a tunnel is formed (see pattern size 92). Sew the buttons near the buttonholes Draw the elastic with buttonholes through the tunnel and fasten it at the buttons. Now you can change the size of the waist by using another buttonhole.

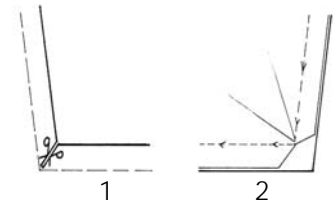
## MODEL 77: BLOUSE

Strengthen the facings of the front and back panel with interfacing.

Join the front and back facing, press seam allowances apart and finish the outer edge of the facing.

Fold pleat as marked in the front panel. Join on top of each pleat a ribbon; we've used at each panel once the fancy ribbon, once the dark small satin ribbon and once the small light satin ribbon. Join the pleat at the bottom and upper edge of the panel.

Join the panel with pleats to the other part of the front panel right sides together. Clip corners of the front panel without pleat almost up to seam line (drawing 1). Front panel without pleat on top while sewing. Leave needle inserted in fabric when pivoting at corners (drawing 2)



Finish seam allowances and press towards the front panel. Join along the seam allowances a transparent ribbon.

Sew the darts in the front and back panels. Press the darts towards the centre and topstitch.

Place front and back panel's right sides together and sew shoulder seams. Finish seam allowances, press towards the back and topstitch.

Sew the sleeve into the armhole, noting placement marks. Finish seam allowances and topstitch at the front and back part.

Finish sleeve hem allowances, press along the break under and topstitch. Cut from the transparent ribbon and from the small satin ribbon in the light color 4 pieces of 40cm each. Top stitch the transparent ribbon at the stitch line of the hem edge, starting at the sleeve seam, ending 4cm before the centre of the sleeve. Join the small satin ribbon on top of the transparent ribbon.

Sew the sleeve and side seam in one operation, finish seam allowances. Topstitch the sleeve hem allowances at the front sleeve.

Join the side seam of the lower front and back part and finish seam allowances. Join the round edge with a lock stitch or fine zigzag stitch.