

recommended fabric dress:

main fabric: baby cord, imitation silk, poplin, linen, with 2 equal contrasting fabrics, 1.40 br.

shirt: tricot, jersey, 1.40 br.

CONSUMPTION, mtr:

	92	104	116	128	140	152
dress, fabric	0.85	0.95	1.05	1.20	1.35	1.55
dress, contr. A	0.65	0.65	0.70	0.95	1.00	1.10
dress, contr. B	0.45	0.45	0.50	0.60	0.70	0.75
Shirt A	0.75	0.85	0.95	1.00	1.10	1.20
Shirt B	0.75	0.85	0.95	1.00	1.10	1.20

REQUIREMENTS:

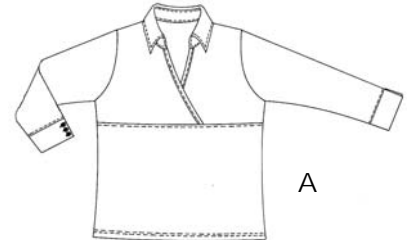
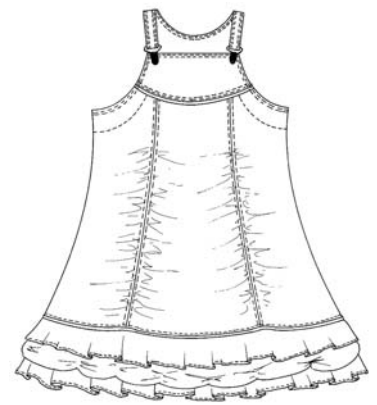
dress: 2 meter elastic, 1cm width
yarn
2 buckles for braces, 2cm
interfacing
10cm left over from the shirt (piping)

shirt A: stretch 'machine' needles
yarn
interfacing
6 buttons, 12mm

shirt B: stretch 'machine' needles
yarn

ABACADABRA®

www.abacadabra.com



Download your own language from our site!
AVAILABLE
ENGLISH
DEUTSCH
www.abacadabra.com

INSTRUCTIONS, NEXT PAGE:

Place the bottom edge of the upper front panels together, centre front marking points to each other. Join the upper part to the lower part of the front panel right sides together. Finish seam allowances and topstitch at the lower part.

Join the sleeve to the armhole right sides together and finish seam allowances.

Cuff: Cut for the loops from fabric off-cuts a strip of 3cm wide and 40cm long along the grain line. Turn under both edges 0,75wide along the entire length, press, fold strip left sides together along middle line and topstitch edges. Finished width loops: 0,75cm. Cut the strip into 6 pieces of 6cm. Fold the loops in half, pin at marked points at 2 cuffs. Fold cuff along the break, right sides together, sew the edge with the loops; from the other 2 cuffs sew the same edge, now only without loops. Turn the cuff and press the edges and fold line.

Place the cuff to the hem edge of the sleeve right sides together, at both sleeves one cuff with loops and one without. Beware! Make sure that you have a 'right' and a 'left' sleeve. Join the cuff to the sleeve, finish seam allowances and topstitch at the sleeve.

Join the side seam and sleeve seam in one operation, finish seam allowances.

Finish hem allowances. Press allowances along the break under and edge-stitch at the finished edge.

Add buttons to the cuff.

MODEL 96: SHIRT B

Attention: we recommend with stretch fabrics to use a special Jersey needle and to select a small zigzag stitch for all sewing.

Join the shoulder seam and finish seam allowances.

Finish the neckline of the front and back part with the strip. Pin strip to the neck line right side on wrong and edge stitch the width of 1cm. Press the strip and seam allowances outwards. Fold strip down the edge, fold underneath seam allowances along the cut edge, overlapping the joining seam, press and topstitch closely along the edge.

Gather the other strips as described with the dress. Finished length of the ruffle must be half the length of the strips.

Join the ruffle to the neckline. Where? See drawing at the pattern sheet.

Cuff: fold cuff in half at the fold line right sides together. Join the straight edge, turn the cuff and press. Join a ruffle along the edge of the cuff.

Place the bottom edge of the upper front panels together, centre front marking points to each other. Join the upper part to the lower part of the front panel right sides together. Finish seam allowances and topstitch at the lower part.

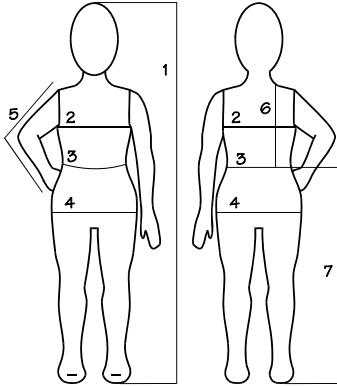
Join the sleeve to the armhole right sides together and finish seam allowances.

Cuff: Place the cuff to the hem edge of the sleeve right sides together. Join the cuff to the sleeve, finish seam allowances and topstitch at the sleeve.

Join the side seam and sleeve seam in one operation, finish seam allowances.


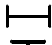


Finish hem allowances. Press allowances along the break under and edge-stitch at the finished edge.

Take the child's measurements!



1.height	92	104	116	128	140	152
2.chest	54	58	60	64	71	79
3.waist	52	54	56	58	61	65
4.hip	55	61	65	69	75	83
5.sleeve length	31	36	41	46	51	55
6.back waist l.	23	25	27	30	32	36
7.side length	53	62	71	80	89	96

Explanation of symbols

-  button
-  buttonhole/eyelet
-  balance mark
-  balance mark

Pattern preparation

- Compare body measurements with the ABACADABRA measurement chart, choose the size corresponding with the chest and hip of the child
- Draw length measurements differences on to the pattern.
- Wash the fabric before cutting
- All patterns are without seams and hems, all contour lines are stitching lines, seam allowances 1 cm all around.
- Note the grain line marked on the pattern! Run the grain line parallel with the selvage.
- Lock stitch: strengthening stitch, (fine zigzag stitch).
- After cutting out the fabric panels, transfer all seam lines and markings onto the fabric. Transfer fold and stitching lines to the right sides of the fabric with basting stitches.

INSTRUCTIONS

MODEL 96: DRESS

Strengthen 1 upper front part, 1 upper back part and the facing of the armhole with interfacing.

Join the side parts to the centre front and back part, finish seam allowances and topstitch at the centre front and back part.

Cut 4 pieces of elastic, length of the front/back panel -5cm for size 92, 104 and 116; -8cm for size 128, 140 and 152. Join stretched elastic to the wrong side of the seam allowances, see drawing.

Cut from fabric off-cuts from the shirt long strips of 3cm wide. Fold strip left sides together along the middle line and press. Join the strip along the upper and lower edge of the front and back panel, open edge along the cut edge of the panels.

Facing armhole: finish the outer edge of the facing. Place facing along the armhole of the front and back part, right sides together and join the armhole. Cut seam allowances back; turn facing inside and edge stitch along the armhole and at the finished edge of the facing.

Finish the bottom edge of the reinforced upper front and back part.

Join the plain upper front and back part to the front and back panel, right sides together. Attention: make sure that the side seam of the upper front and back part is 1cm greater than the matching seam of the front and back part. Press seam allowances towards the upper part. Place the reinforced upper part to the plain upper part right sides together and join the side seam and upper seam. Cut seam allowances back diagonally across corners. Turn the upper part inside and press edges. Topstitch all around, simultaneously join the bottom edge of the inside upper part.

Place front and back part right sides together and join side seams, finish seam allowances and top stitch seam allowances at the armhole.

Bottom part of the dress.

The bottom part has 3 layers, which one is which part?

The upper (outside) layer: flounce 'C', a round flounce, joined to the upper part without gathering.

The middle layer: flounce 'D' in combination with flounce 'A', flounce A fold double along the middle line, gathered and stitched to the round edge of flounce D.

The lower (inside) layer: flounce 'C' in combination with flounce 'B', flounce B finished at 1 long edge, the other long edge gathered and joined to the round edge of flounce C.

Finish every layer separate as follow:

The upper layer: flounce 'C', place 2 founces C, right sides together and join the side seam, finish seam allowances and finish the outer edge with a lock stitch or a small zigzag.

The middle layer: flounce 'D' in combination with flounce 'A', place 2 founces D right sides together and join the side seams, finish seam allowances. Join the founces A right sides together and join side seam so a circle is formed. Fold double along the middle line, gather the open edge. Gather the edge as follows: sew along the edge with large

stitches, once 0,5 cm from the edge and once 1.5cm from the edge.

Tighten threads to the respective outer edge length of flounce D and knot ends. Even out the gather. Join the gathered edge to the round edge of flounce D, right sides together. Finish seam allowances and topstitch at flounce D. For a 'balloon' effect: topstitch flounce A every 20cms a little 'messy'.

Inner layer: flounce 'C' in combination with flounce 'B'. Place the 2 founces C right sides together and join the side seams, finish seam allowances. Place founces B, right sides together and join side seams (a circle is formed). Finish one long edge with a lock stitch or small zigzag and gather the other long edge as described at the middle flounce. Join flounce B to flounce C right sides together, finish seam allowances and top stitch at flounce C.

Place the 3 layers on top of each other, right sides on top. Sew together and join the bottom edge to the front and back part right sides together. Finish seam allowances and topstitch at the front and back part.

MODEL 96: SHIRT A

Attention: we recommend with stretch fabrics to use a special Jersey needle and to select a small zigzag stitch for all sewing.

Strengthen one collar, 1 collar, 1 collar foot and the cuff with interfacing.

Cut from fabric off-cuts 2 strips of 3,5cm wide and 25cm long.

Finish the centre front of the upper part of the front (part 11) with the strip. Pin strip to the centre front line right side on wrong and edge stitch the width of 1cm. Press the strip and seam allowances outwards. Fold strip down the edge, fold underneath seam allowances along the cut edge, overlapping the joining seam, press and topstitch closely along the edge.

Join the shoulder seam and finish seam allowances.

Place the reinforced collar to the plain collar foot and join the concave(?) edge, press seam allowances apart. Work the same with the plain collar and the reinforces collar foot.

Place both collars right sides together and join the front edges and upper edge. Cut seam allowances back, diagonally across corners and turn the collar.

Join the collar foot to the neckline: right side of the collar foot (plain) to the wrong side of the neckline. Press seam allowances towards the collar. Fold under seam allowances along the cut collar foot edge, overlapping the joining seam, press and topstitch all round closely along the edge.